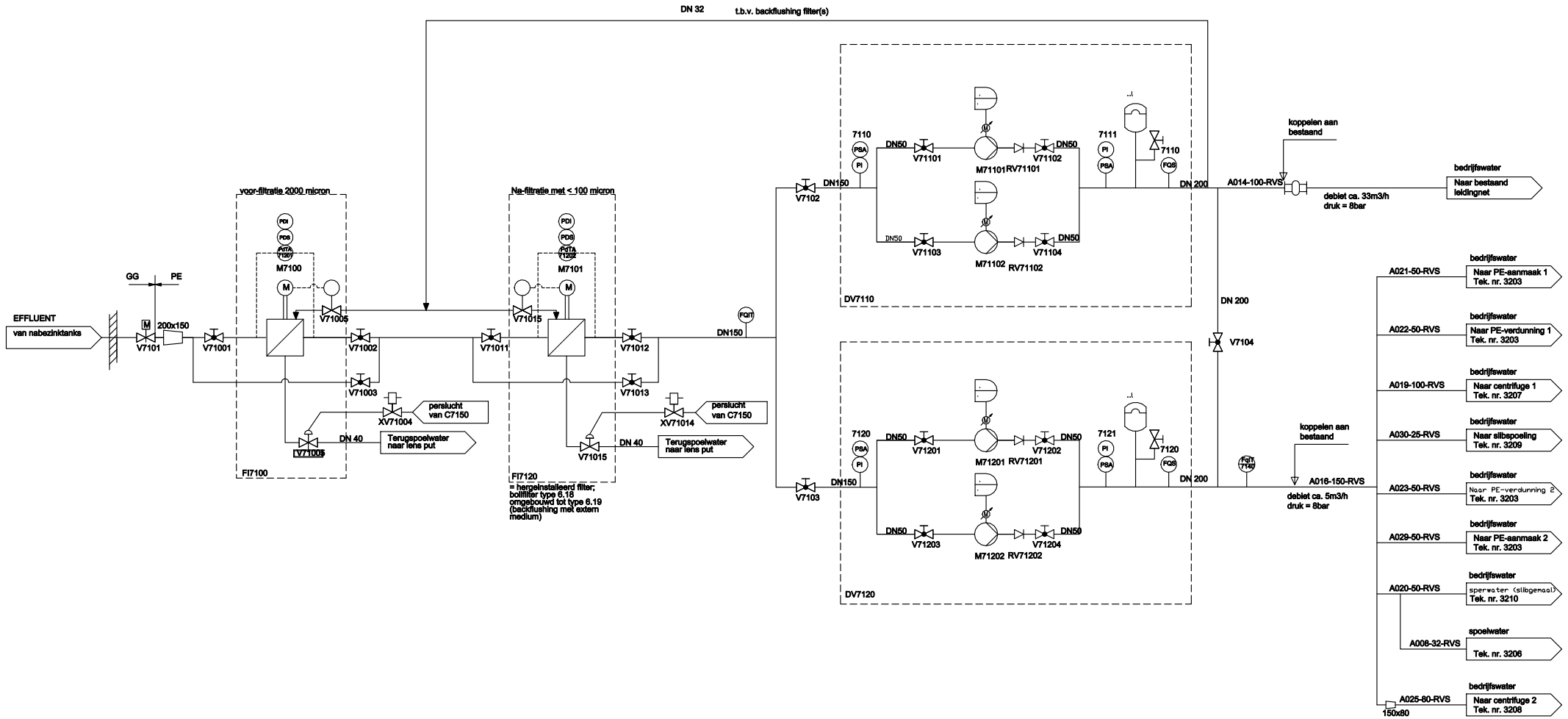


OI7010  
ONDERBREEKTANK

T7020  
TANK  
(BESTAANDE TANK AANPASSEN)

DV7030  
DRUKVERH.INSTALLATIE



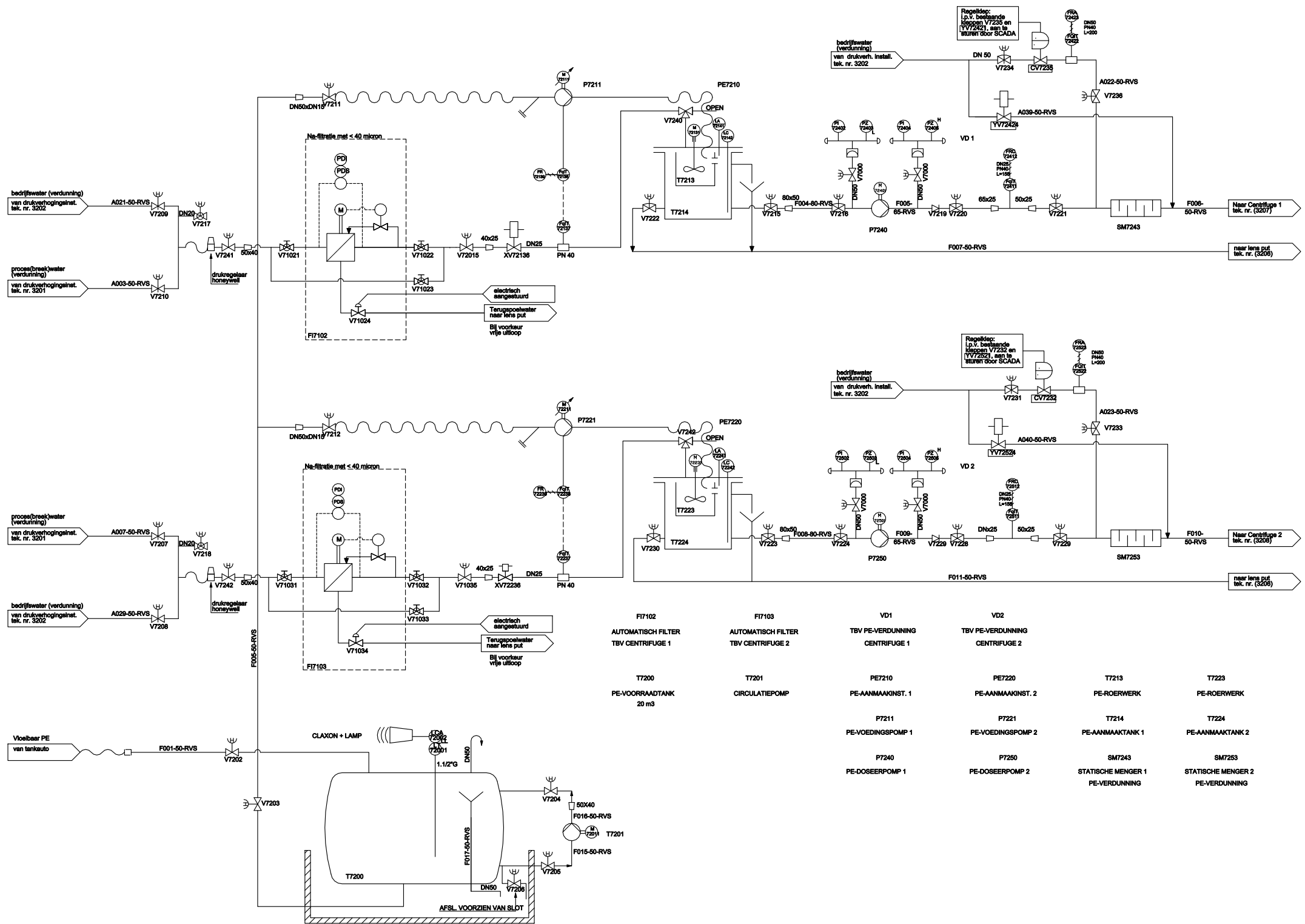
FI7100  
AUTOMATISCH FILTER  
GROF

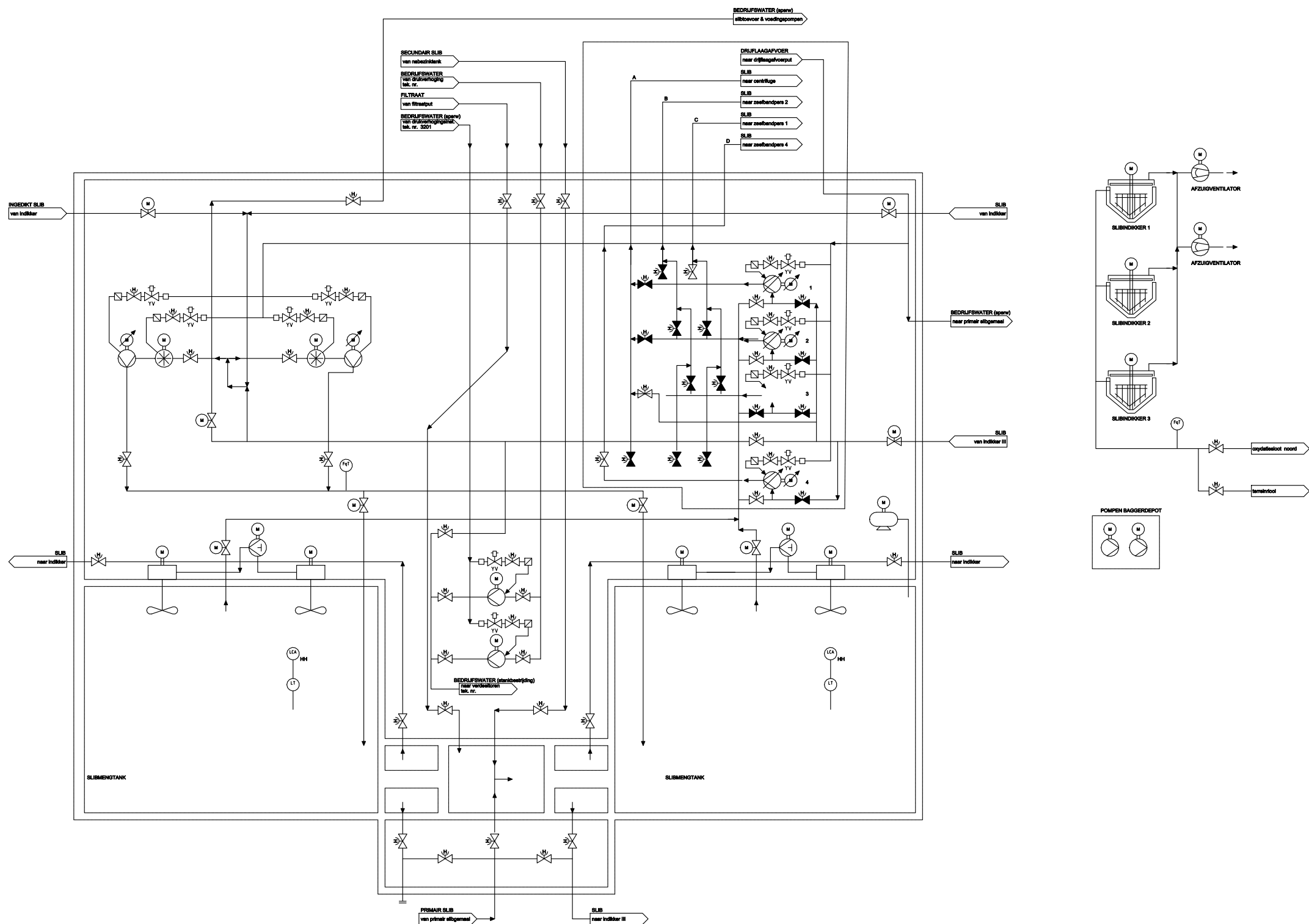
FI7120  
AUTOMATISCH FILTER  
(BOLL & KIRCH)  
OMGEBOUWD EN HERGEINSTALLEERD

DV7110  
DRUKVERHOOGING 1  
TBV BEDRIJFSWATER

DV7120  
DRUKVERHOOGING 2  
TBV BEDRIJFSWATER  
(PE-AANMAAK)

C7150  
WERKLUCHT  
COMPRESSOREN



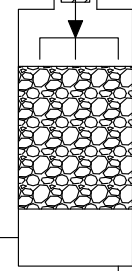


BEDRIJFSWATER (SPROEIWATER)

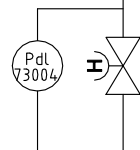
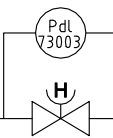
van drukverhoging  
tek. nr. 3202



TR73002



LF7300

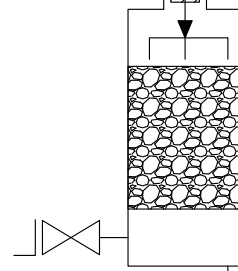


VENTILATIELUCHT  
van slibverw.gebouw  
tek. nr. 3211

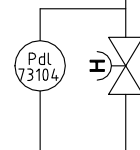
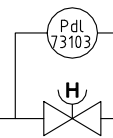
VENTILATIELUCHT  
van laadruimte  
tek. nr. 3211

LF7300  
LAVAFILTER

TR73102



LF7310



SPROEIWATER (VERVULD)  
naar riolering

LF7310  
LAVAFILTER

PP8340  
LENSPOMPPUT 1 (bestaand)  
SUBSILOGEBOUW

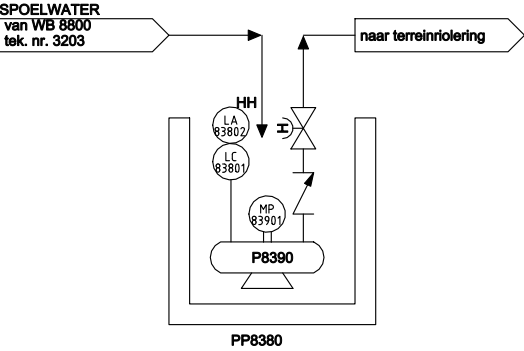
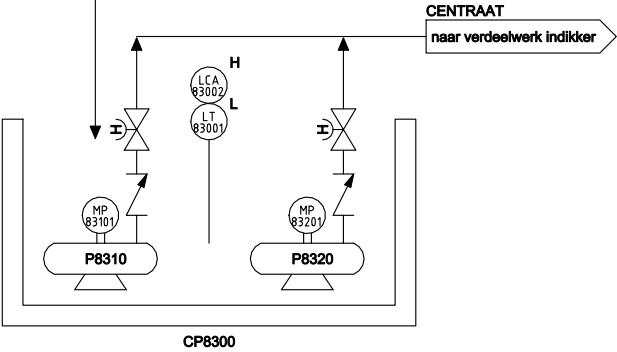
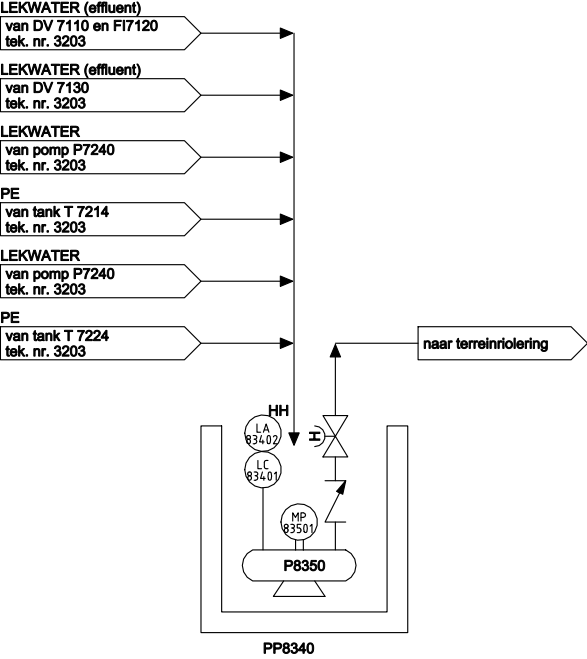
CP8300  
CENTRAATPOMPPUT

PP8360  
LENSPOMPPUT 2 (bestaand)  
ZEEFBANDGEBOUW

PP8380  
LENSPOMPPUT 3  
WEEGBRUGKELDER

CENTRAAT  
van centrifuge 1  
tek. nr. 3209

CENTRAAT  
naar verdeelwerk indikker



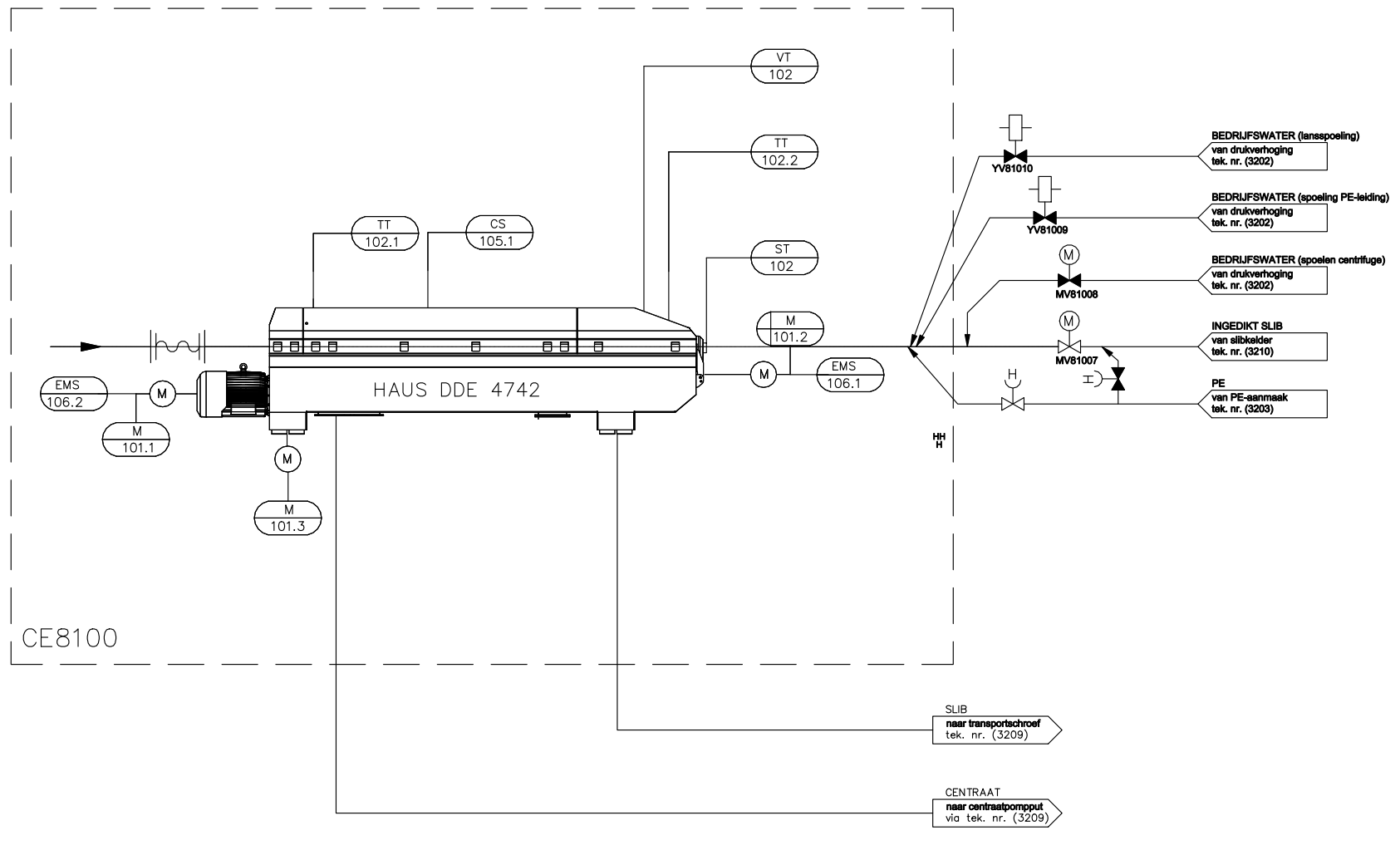
P8310  
CENTRAATPOMP 1

P8320  
CENTRAATPOMP 2

P8350  
LENSPOMP 1  
(bestaand)

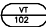
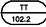
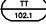
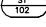
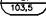


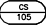
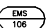


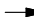


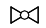
P8370  
LENSPOMP 2  
(bestaand)

P8390  
LENSPOMP 3  
(nieuw)

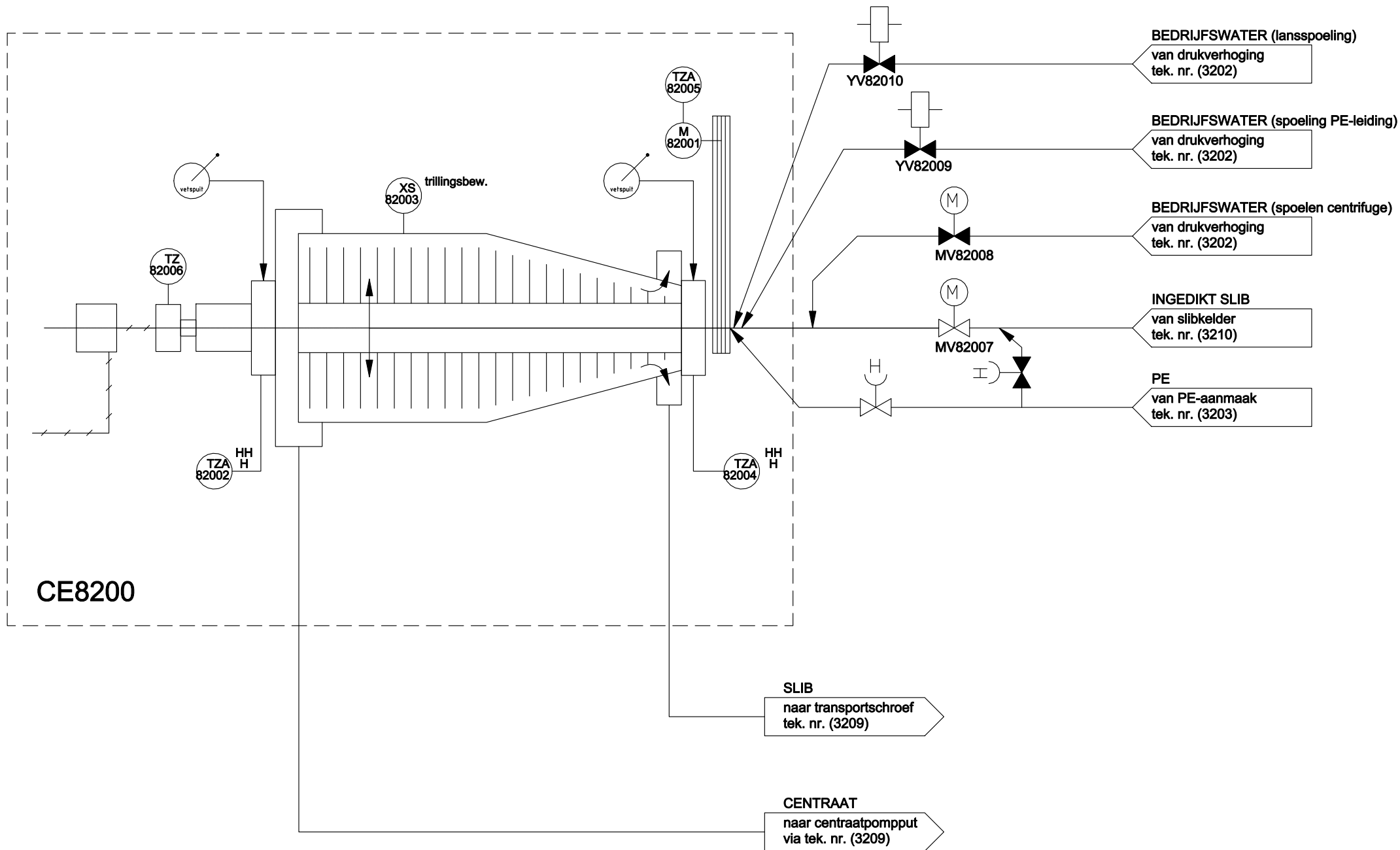


CE8100

CE8100  
CENTRIFUGE 1

-  → Vibration sensor
-  → Solids outlet (side) bearing block temperature sensor
-  → Liquids outlet (side) bearing block temperature sensor
-  → Revolution counter
-  → level transmitter
-  → Temperature thermistor
-  → Solenoid valve
-  → Cover switch
-  → External maintenance switch
  
-  → Pneumatic valve (24V DC)
-  → Solenoid valve (24V DC)
-  → Compressor
-  → Flange
-  → Check valve
-  → Ball valve

Part code	M-101.1	M-101.2	M-101.3		EXT signals
Definition	Bowl drive of decanter	Scroll drive of decanter	Automatic lubrication		Pot. free contact level sludge OK
Technical Data	Power : 45 kW	Power : 15 kW	Power : 0,1 kW		Pot. free contact level solids container OK
	Speed : 1500 rpm	Speed : 3000 rpm			Polymer unit general fault
	Inverter ABB	Inverter ABB	D.O.L.		



CE8200  
CENTRIFUGE 2

